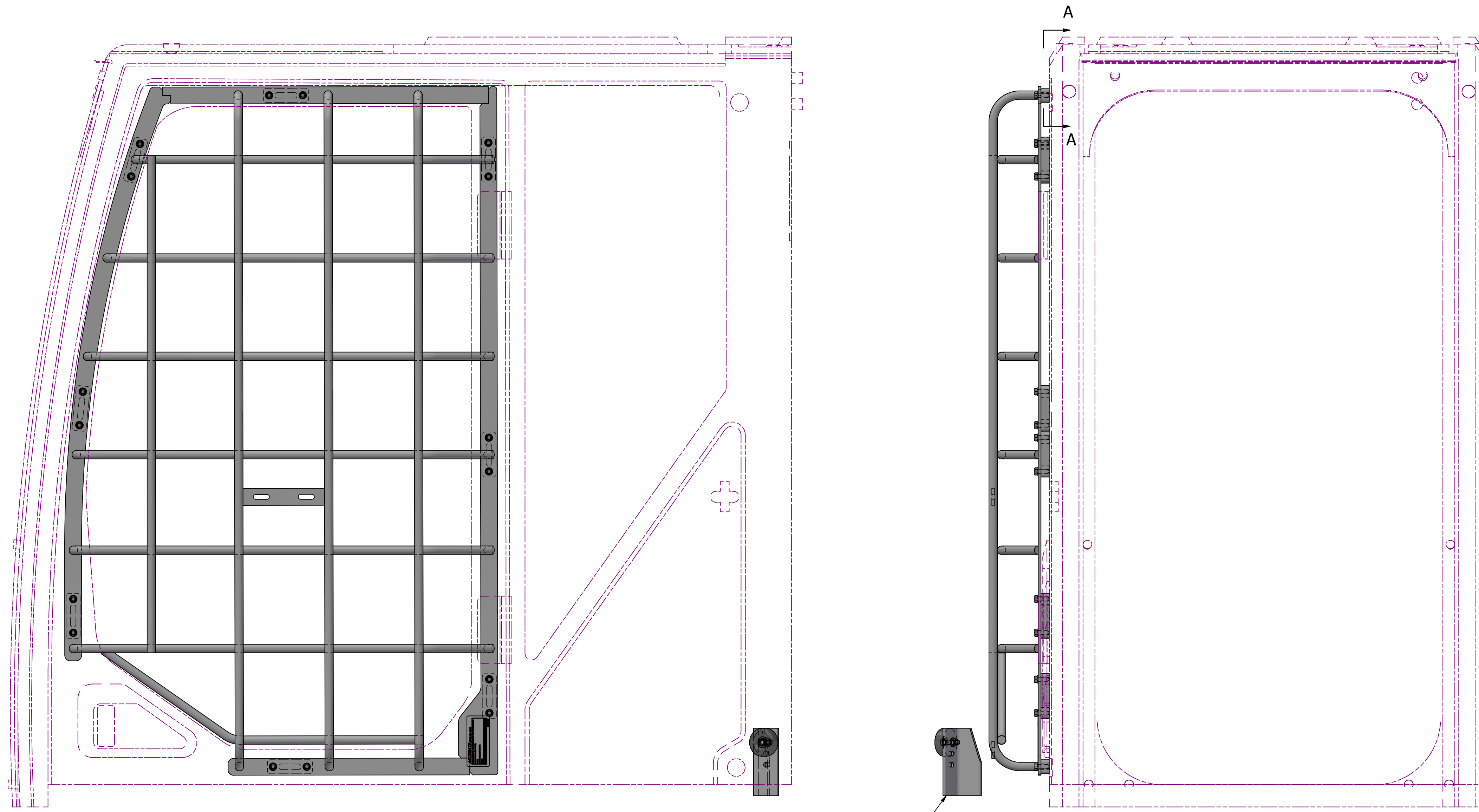
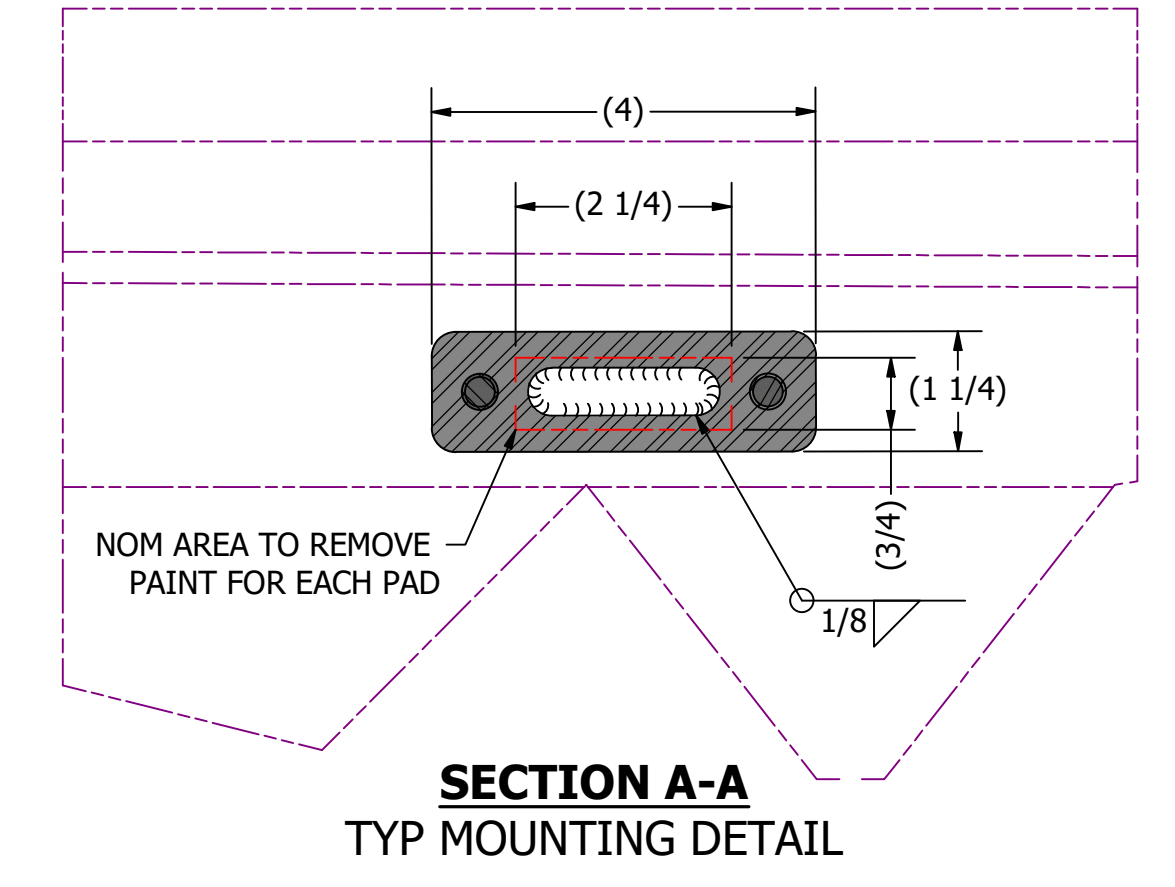
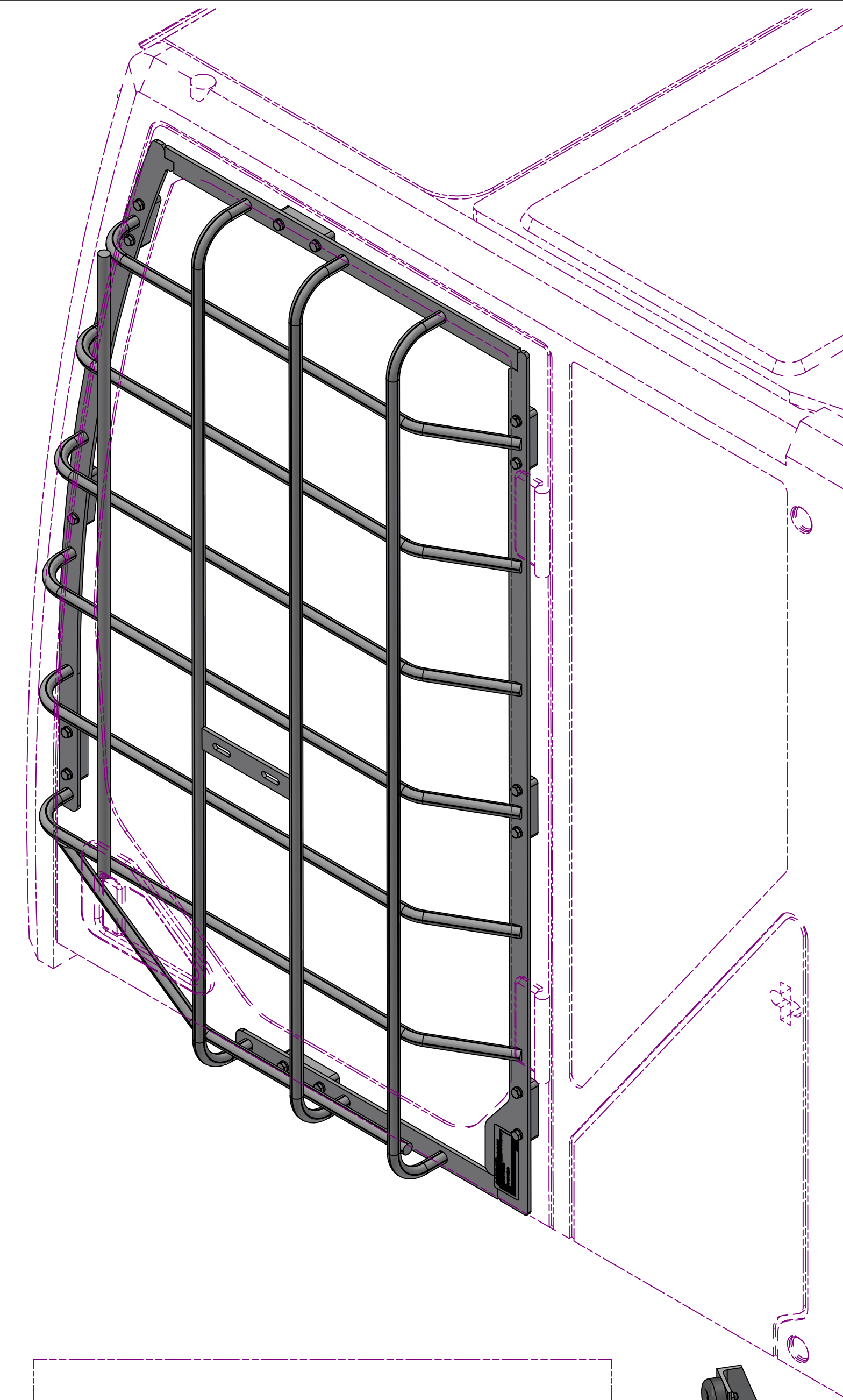


CAB DOOR WINDOW GUARD INSTALLATION

- 1) REMOVE THE DOOR.
- 2) MASK WINDOWS.
- 3) PLACE GUARD ONTO THE DOOR AND TRACE MOUNTING BLOCKS WITH REMOVABLE MARKER.
- 4) REMOVE GUARD AND SAND OFF PAINT IN AREAS TO BE WELDED, AS SHOWN.
- 5) PLACE GUARD BACK ON DOOR AND REMARK EXACT LOCATIONS FOR MOUNTING BLOCKS.
- 6) REMOVE MOUNTING BLOCKS FROM DOOR GUARD AND LIGHTLY TACK TO THE DOOR BASED ON LAYOUT LINES.
- 7) RECHECK DOOR GUARD ON MOUNTS TO ENSURE PROPER BOLT LINEUP AND FRAME ORIENTATION.
- 8) WELD MOUNTING BLOCKS WITH A 1/8" FILLET ALL AROUND AS PER DRAWING IN SLOTS ONLY. DO NOT WELD THE OUTER SEAM OF THE BLOCK AS THIS IS TO BE GIVEN A BEAD OF SILICONE BEFORE PAINTING.
- 9) CLEAN WELDS AND ANY EXCESS SPATTER, MASK DESIRED AREA TO BE PAINTED AROUND EACH BLOCK, ADD A SMALL BEAD OF SILICONE AROUND THE OUTER SEAM OF THE MOUNTING BLOCKS AND APPLY PAINT.
- 10) WHEN PAINT IS DRY REINSTALL DOOR ON THE CAB, THEN BOLT GUARD INTO FINAL POSITION.
- 11) OPTIONAL DOOR STOPPER MAY BE ADDED TO THE MACHINE CATWALK TO ENSURE NO DAMAGE CAN BE DONE TO THE LEFT REAR WINDOW OR CAB FRAMEWORK IN ABSENCE OF REAR WINDOW GUARD OR OTHER TYPE OF PROTECTION. A RUBBER DOOR STOPPER AND LATCH ARE SUPPLIED AS AN OPTION WITH EACH DOOR GUARD AND TO BE LOCATED AT INSTALLER'S DISCRETION.



INSTALLER TO LOCATE OPTIONAL STOPPER AND LATCH ON ASSY



UNLESS OTHERWISE SPECIFIED TOLERANCES ON DIMENSIONS ARE AS FOLLOWS:		<p>Accurate Fabricating Ltd. 12875 95th Avenue Surrey, B.C., Canada V3W 0K8 Tel: 604-591-6184 Fax: 604-591-5875</p>		THE INFORMATION CONTAINED HEREIN IS THE SOLE PROPERTY OF: Accurate Fabricating Ltd. ANY COPYING, TRANSMITTAL TO OTHERS, AND ANY OTHER USE EXCEPT THAT FOR WHICH IT IS LOANED IS PROHIBITED WITHOUT EXPLICIT WRITTEN CONSENT			
FRACTIONAL DIMENSIONS	±1/32			CAB WINDOW GUARD INSTALL		EST TOTAL WT (LBS) 94	
TWO PLACE DECIMAL (0.00)	±0.02			DRN	JAY	CHK'D	
THREE PLACE DECIMAL (0.000)	±0.005			DATE	2019-02-20	SIZE	DWG NO
ANGLES	±1°			SCALE	NTS	D	INSTALL
CAST AND FAB. DIMENSIONS	±1/16	WO REF			SHEET		
THIRD ANGLE PROJECTION		WHEN IN DOUBT ASK			REV		
					1		
					1 OF 1		